

Sea-Air Logistics

There are two sides to every shipment story



Discover a world where cargo moves with the speed of air and the lower cost of sea freight.

Whether purchasing in-store or online, customers dislike delays. With more and more buying options available, they can easily change to another source. Having a diverse shipping strategy is essential for maintaining stock levels and quickly getting products into the hands of your end consumers.



When air freight alone weighs heavily on your bottom line, Sea-Air Logistics offers speed at budget-friendly rates. Combining modes helps avoid port congestion, capacity shortages and unforeseen disruptions that may hamper delivery times. It is a nimble and practical alternative that overcomes shipping challenges during seasonal peaks—and year-round.

If you currently use conventional sea or air freight, making the switch is effortless. Sea-Air is suitable for scheduled and unplanned cargo with various origin/destination pairings.

You can move everything from the latest fashions to the newest tech device on a timetable that matches your unique business.



Long story short

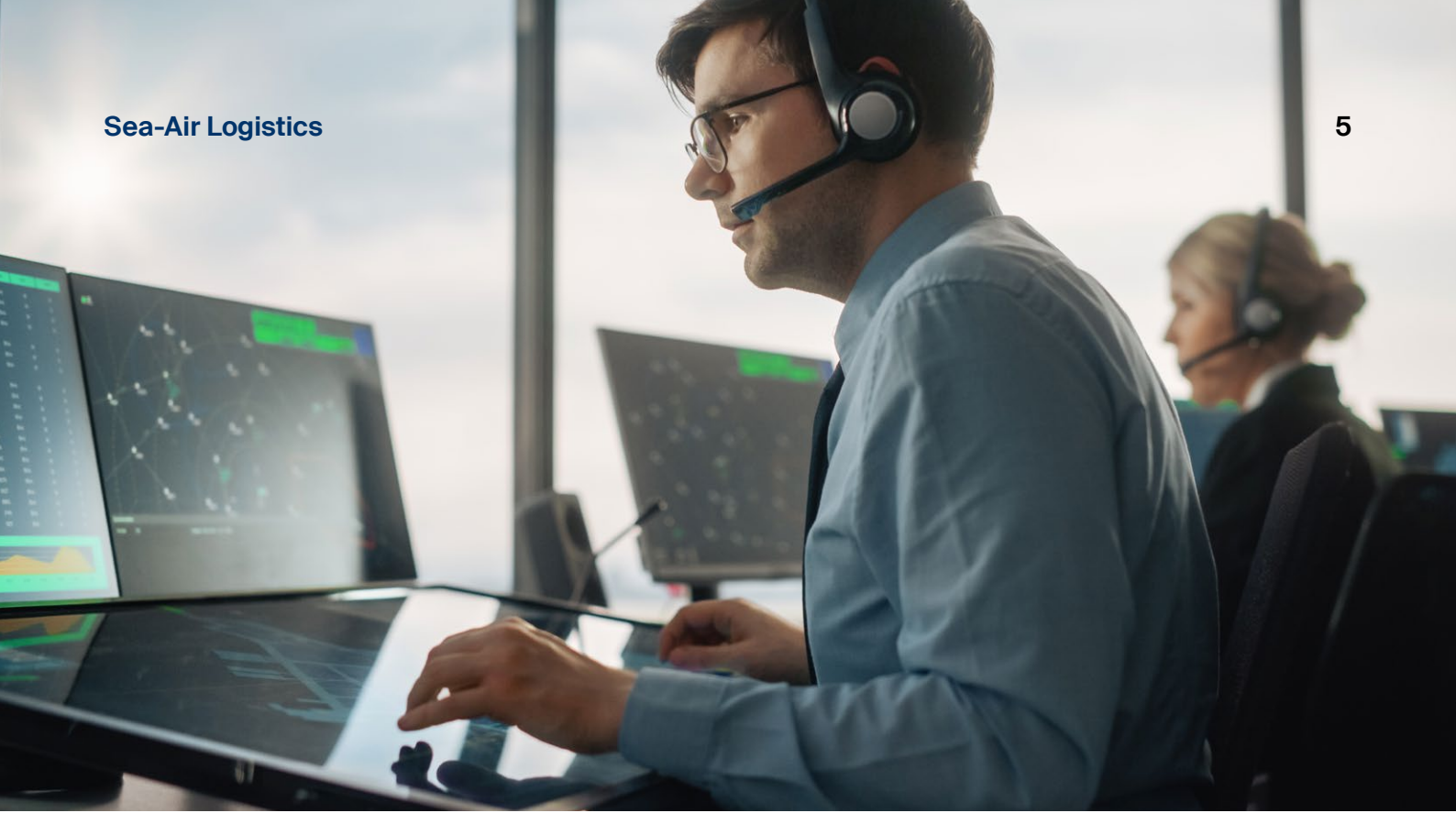
By seamlessly synchronising two traditional transport modes, Sea-Air offers sustained reliability for your international shipping.

With predictive analytics for planning and execution, you can diversify your supply chain options while boosting your on-time delivery schedule. Wherever you ship, Sea-Air Logistics is designed to help you keep your customer promises.



“Maintaining a resilient and flexible supply chain was the key to success over the last 2–3 years. It’s how every business will stay competitive in the future.”

Leo Qvarnström.
Director Sea-Air Product & Air Sustainability
North America



Your supply chain is the central character



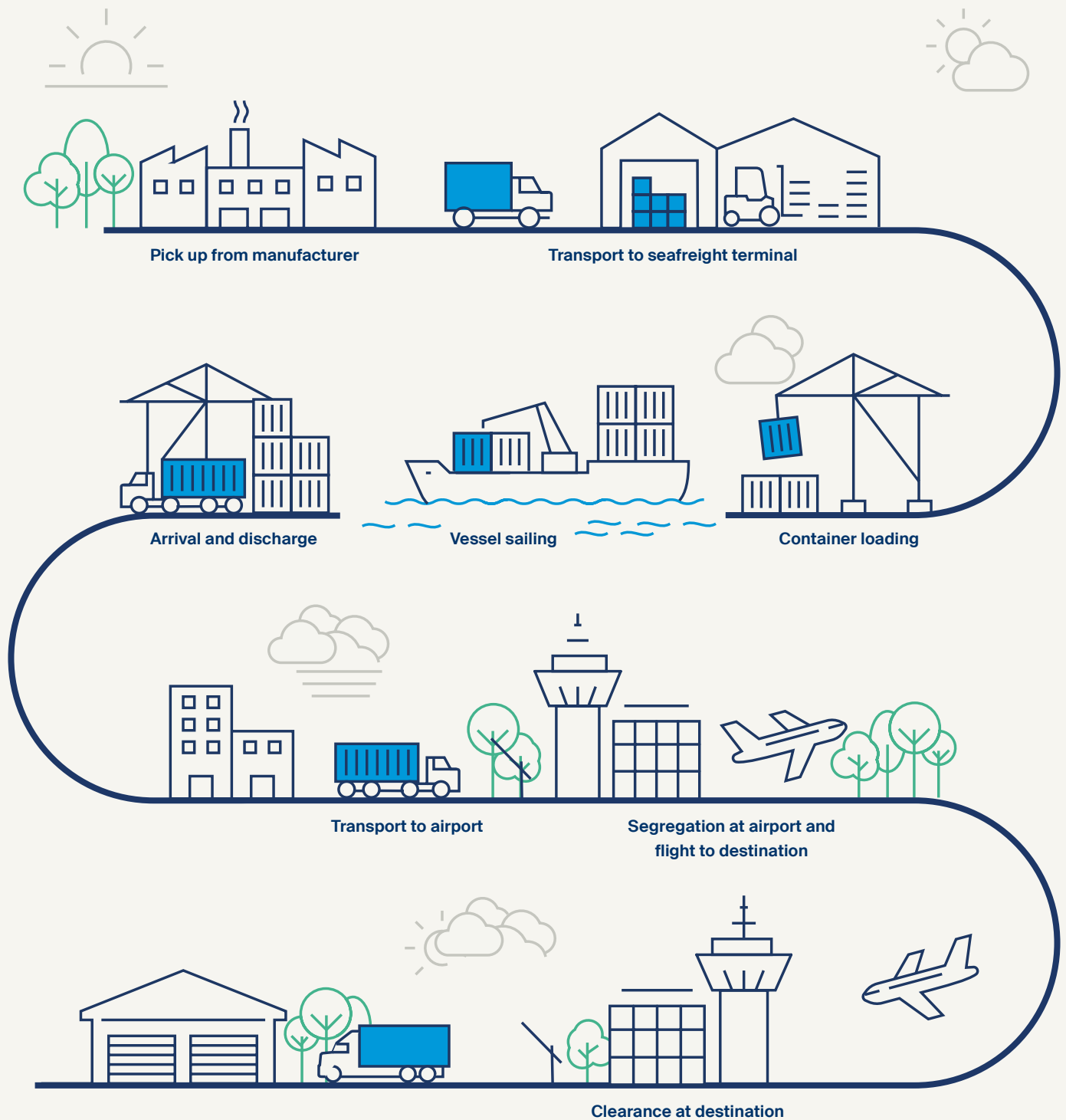
Every touchpoint in the journey is designed to achieve maximum results. With pre-booked capacity, Sea-Air combines the best features of each mode and strengthens your speed-to-market advantage. Shipments from ports in Asia typically sail to the hub and are trans-loaded to an aircraft within 48 hours to destinations worldwide.



Our dedicated control tower team determines the precise movement of your cargo with every step of the operational process engineered to **minimise transit time**. Shipments move in separate sea containers with the highest equipment and space priority. Loaded on the vessel as one of the last containers, they are the first offloaded at the destination port, saving anywhere from 18 to 24 hours for discharge versus conventional handling.



During sea transport to the hub, your shipment is assigned air freight space—a mix of blocked-space agreements and free market capacity—ensuring cargo is uplifted without dwell time.



This seamless synchronisation of the two transport modes significantly **improves performance, speed and reliability.**



Change the shipping narrative

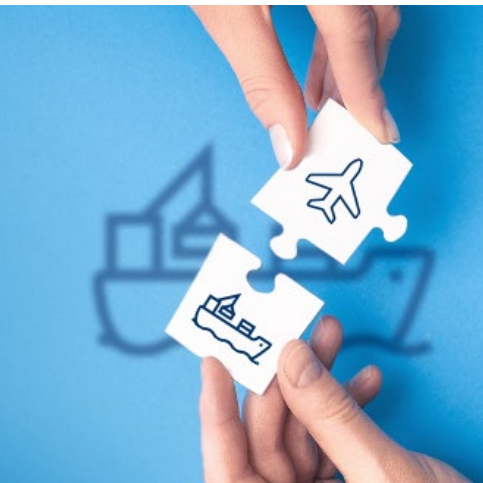
Even if you have yet to consider making the transition, it's never too late to start reaping the rewards. Diversify with Sea-Air for cargo volumes across multiple origin/destination pairings.

An added benefit of the longer transit time is using it as free storage on the water. If you normally ship by air but can wait the added one to two weeks, deferring the transit of planned shipments saves on warehouse costs. Plus, the hubs are home to free trade zones. This means no added costs or customs clearance fees.

Operating with ocean carrier express services, the **emphasis is on lead time** (last-on, first-off priority). Stringent carrier conditions require fixed availability at the destination, ensuring containers are loaded on the scheduled vessel and not rolled.

With roughly two weeks' notice from origin to port, there is ample time to secure the air freight booking. For major destinations, fixed allocation terms with the airlines commit capacity from transit hubs. Any missed uplifts are quickly managed with alternate flights.

Those strict provisions, courier-style planning and generous uplift capacity at transfer hubs **lock in your on-time arrival**.



Compose a flexible strategy

What are your must-haves when planning for this year, next year and beyond? On-time delivery, cost, sustainability—or all of the above?

With tight markets and unpredictable supply chains, staying flexible is fundamental. No matter your priority, Sea-Air Logistics dovetails into any transportation framework. We select transit hubs that ensure your shipments bypass congested air and sea ports.

Every step is engineered to **minimise cost and transit time**, offering the highest priority for equipment, space, loading and offloading. This seamless synchronisation notably **improves performance, speed and consistency**. With more dependable ETAs, you can plan precisely and keep delivery promises to your customers.

Every step is engineered to minimise cost and transit time, offering the highest priority for your shipment.



Sophisticated handling procedures to transfer your freight between the transit stations.

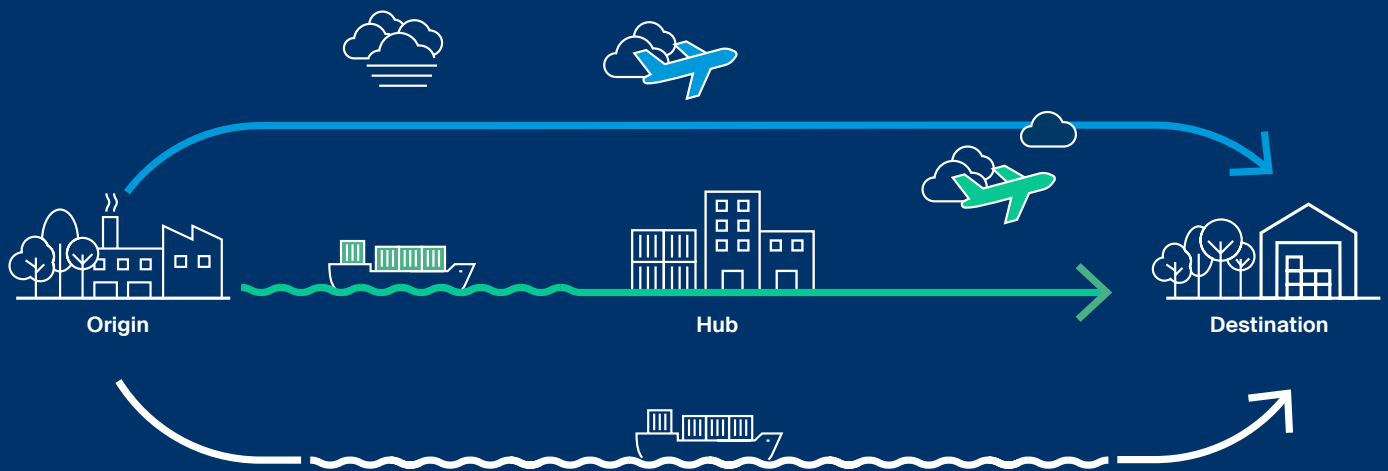


A safe conclusion

Some shippers raise concerns about double handling between hubs and the potential for damage. Because of those multiple touchpoints, our team has sophisticated handling procedures to transfer your freight safely between transit stations.

Sea-Air shipments are handled in a dedicated area with reduced processing. We assemble cargo into single units for sea and air freight using shipper-loaded full container loads (FCL) and unit load devices (ULD). Both provide ultimate protection during the vessel journey and flight, ensuring your goods arrive in excellent condition.

Keep the action going with shipping scenarios that fit any schedule



Transit times from origin to shelf



7 days by air alone



25 days by Sea-Air



45 days by sea alone



**Sea-Air Logistics
Simply, better together.**